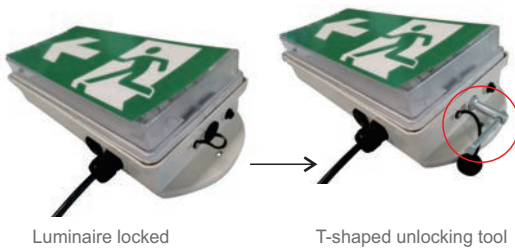


AXX-E

LED Explosion Proof Exit Light

Features:

- Emergency control power supply specially designed for the luminaire.
- EMC/EMI function.
- 3-hour emergency operation.
- Central locking is available.
- Label content can be customized.
- Low working wattage for energy saving.
- Ingress protection rating IP66.
- Each lamp is equipped with a T-shaped unlocking tool that can be used for all lamps. Refer to the below image.



Two Options of Function:

- Model 1: EXIT sign remains on with or without mains electricity.
- Model 2: EXIT sign does not light up when there is mains electricity, but only lights up when there is a power outage.

Specifications:

Explanation of Indicator Light:

- **RED light on:**
 1. Fast charging for 2 hours.
 2. Charging indicator, displaying 20% -80% battery capacity.
- **GREEN light on:**
 1. Trickle charging.
 2. Charging indicator, displaying 80% -100% battery capacity.
- **YELLOW light on:**
 1. Discharge below 20%.
 2. If the yellow light is on in any state, it indicates that the product is out of order.
- **RED, YELLOW and GREEN lights on at the same time, or YELLOW and GREEN lights on at the same time:**

It can be reset by testing the switch: first, power off. Then press and hold the switch for 5 to 6 seconds to ensure shutdown. Finally, power on again.

Description of Switch:

- 1. Press the switch "ON" once, the EXIT sign and indicator light will flash once, with an ON/OFF interval of 10 seconds.
- 2. With mains electricity disconnected, long press and hold the switch for 3 to 5 seconds to turn off the product. If the EXIT sign needs to be turned on again, it will be activated through mains electricity.
- 3. The product will automatically have monthly inspection. EXIT sign and indicator light will flash once every 30 or 31 days.
- 4. The product will automatically have an annual inspection. EXIT sign and indicator light will flash twice every year.

Certifications:

Global (IECEX):

Gas:	Ex db eb mb q IIC T4/T5/T6 Gb
Dust:	Ex tb IIIC 80°C / 95°C/130°C Db IP66

Rated voltage AC: 100-277VAC or 100-347VAC

Rated voltage DC: 12 V - 36 V

Rated frequency: 50 / 60 Hz

Degree of protection: IP66

Operation temperature: -20°C~+60°C (T5 / T95°C)
or -20°C~+40°C (T6 / T80°C)

Max surface temperature: T6 for gas and T80°C for dust

Weight: approx. 4.32 kg / 9.52 lb

Rated wattage: Regular wattage in normal mode: 3W
Max. wattage in normal mode: 10W
(Notice: 15W version is available, switchable to ordinary illumination.)

Lifespan: 50,000 hours

Warranty: 5 years

Batteries: 3.7V, 2 A

Cable entry size: M25×1.5, 3/4 NPT

Stopping plug: M25×1.5

Emergency time:

Escape route sign luminaires: 3 hours

Emergency lighting luminaires: 3 hours

Charging time*: ≥24 hours

Impact strength (IK code): IK08 (IEC 62262)

Installed terminal strip: PE + N + L

Connection terminals solid max.: 4mm²

Connection terminals finely-stranded max.: 2.5mm²

*Notice of Charging:

Quick charging for the first 2 hours to 20% to 80%, then followed by trickle charging to 80% to 100%. Once the battery level is below 100%, trickle charge comes in again.

AXX-E Series Explosion-Proof LED EXIT Sign

Model Encoding:

AXX-E XX - Y ZZ W



- 1 "AXX-E" means explosion proof Exit sign product.
- 2 XX indicates the LED power supply wattage.
- 3 Y indicates the label content or EXIT picture model
4. ZZ is the function type of LED when there is mains electricity.
"M" - Maintained Mode
"NM" - Non-Maintained Mode
5. W indicates the mounting type
"W" - Wall Mounted
"P" - Pendant Mounted
"C" - Ceiling Mounted

*Example:

The model of 3W Pendant-Mounted, Maintained EXIT sign luminaires with left arrow sign and human sign is EXX-E03-HMP.

Standard Materials:

- Housing: Glass Fiber Reinforced Polyester Resin
- Cover: PC
- Bearing: Stainless steel
- Mounting Sling: Stainless steel

Emergency Control Power Supply:

Input voltage:	100-277VAC or 100-347VAC, 50/60Hz
Input current:	Max. 0.5A
Input power:	3W-15W
Output voltage:	3.15VDC
Output current:	Max. 3.15A
Emergency time:	3 hours
Response time:	0.5 second
Battery:	NCR18650B (1S1P); 3400mAh
Charge time:	≥24 hours



Image: Control Gear



Image: Control Gear

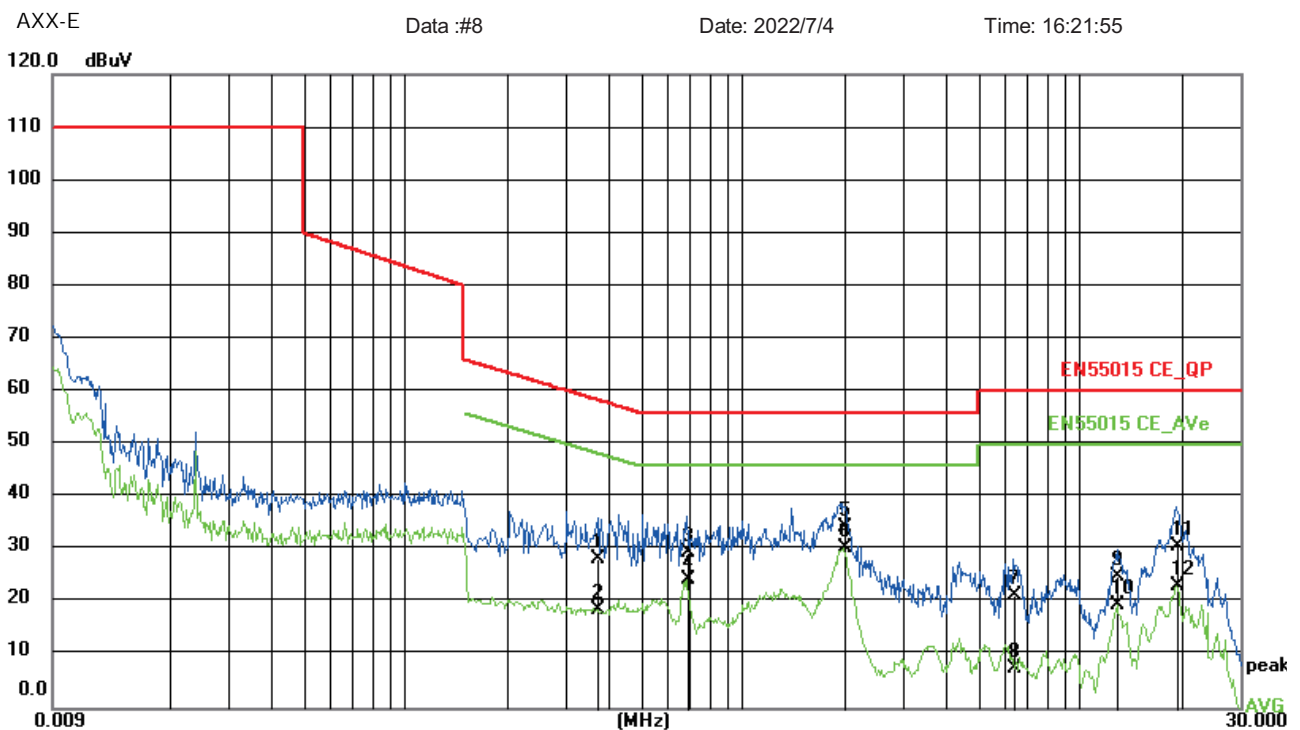


Image: Battery

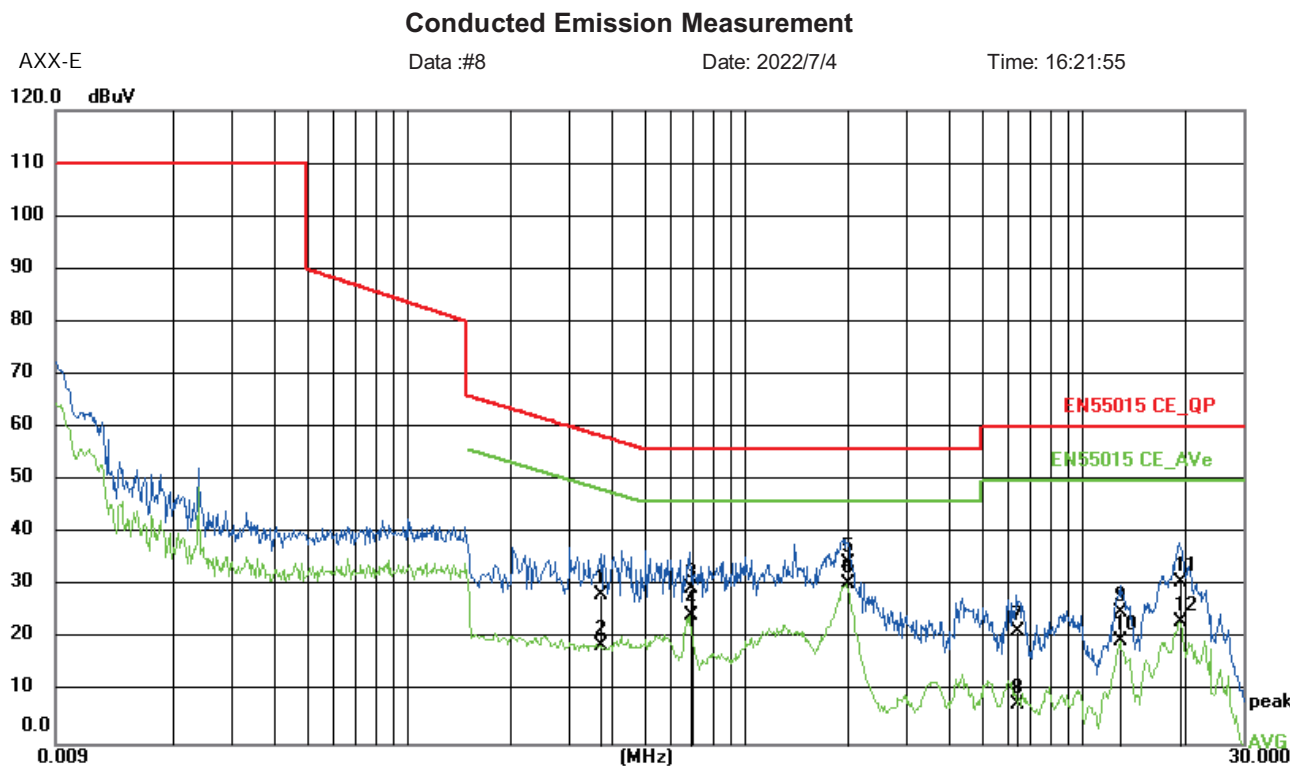
EMI & EMC Diagram (1):

Impact of the product on the grid

Conducted Emission Measurement

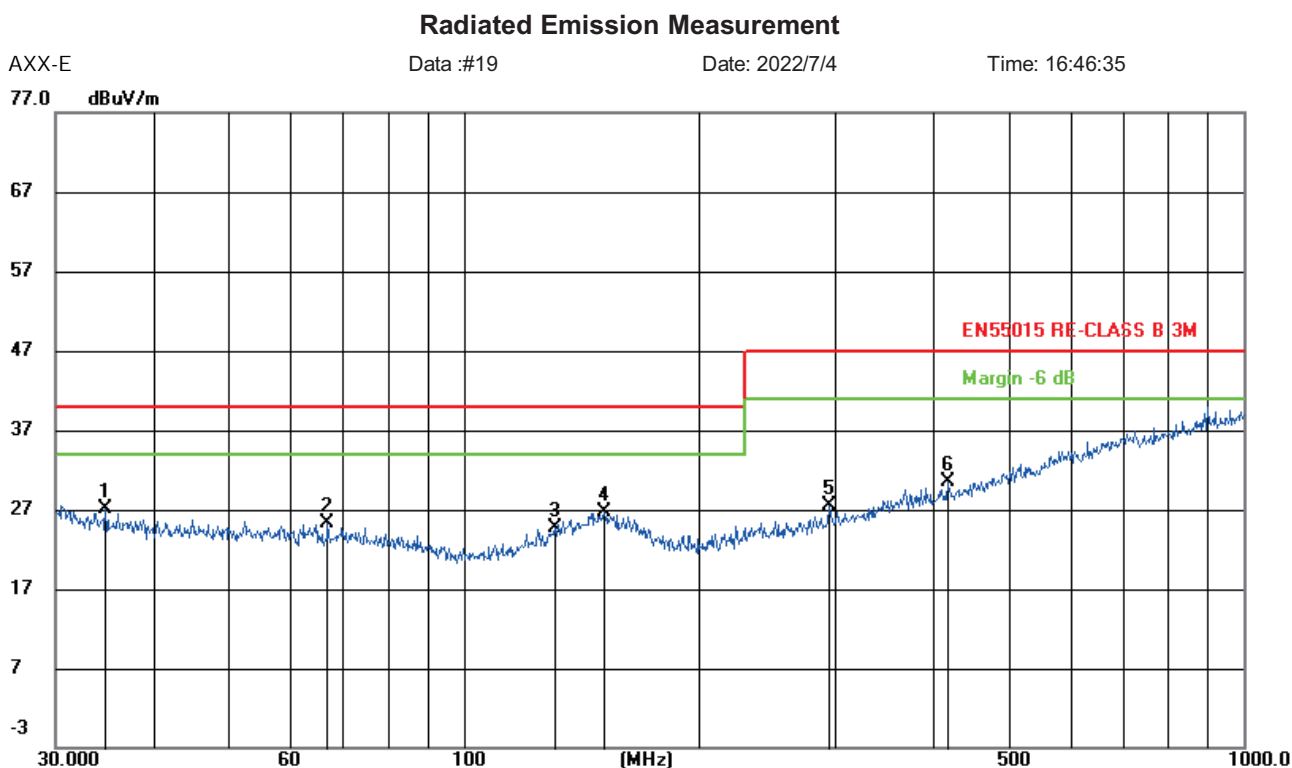


EMI & EMC Diagram (2):



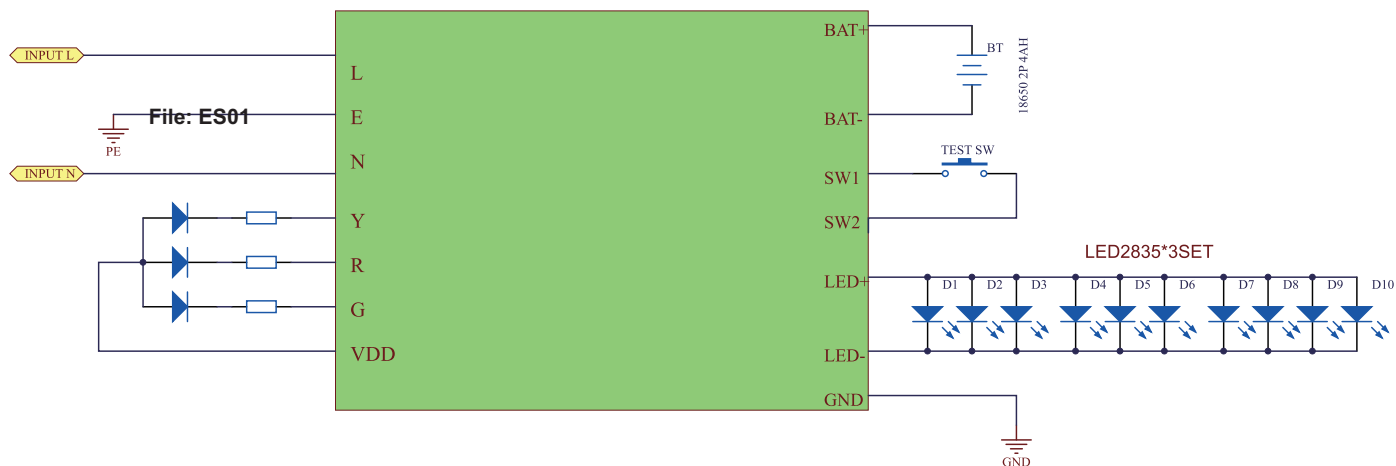
EMI & EMC Diagram (3):

Impact of the product on environmental location

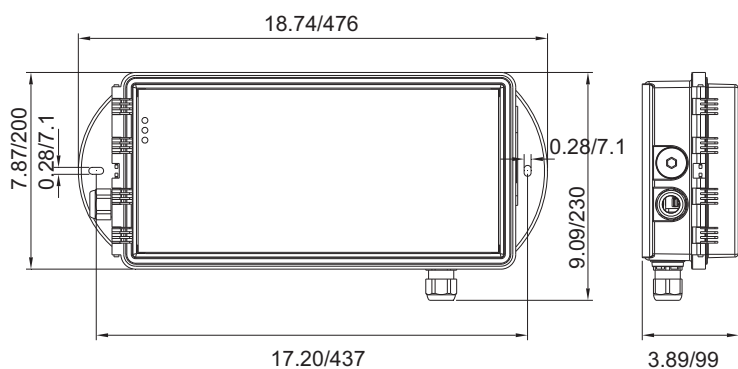


AXX-E Series Explosion-Proof LED EXIT Sign

Circuit Diagram:

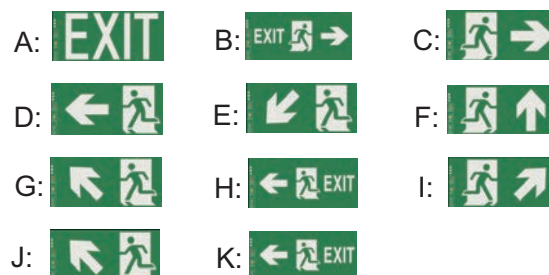


Dimension: unit: inch/mm



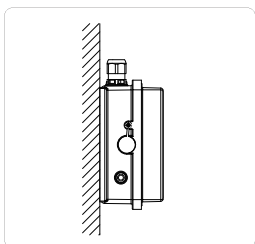
Label Content:

Label size: 14.37x6.50inch/365x165mm
Visible distance: 65.62ft/20 meters



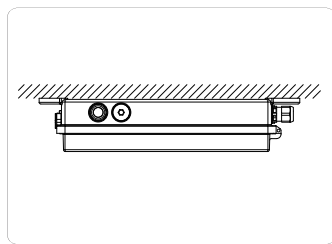
Mounting:

1. Wall Mounting:



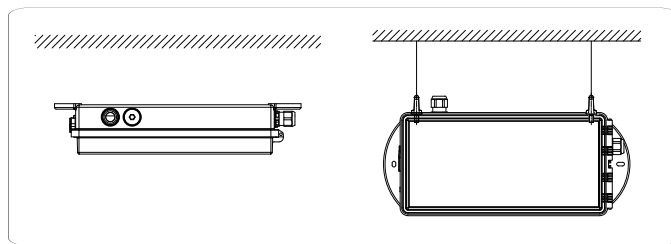
Open the cover by turning the regular hexagon spanner counterclockwise. Then connect the wire, fix the fixture to the wall.

2. Ceiling Mounting:



Fix the fixture to the ceiling through the two mounting holes on the fixture.

3. Pendant Mounting:



First, connect the two pendant strings with the fixture. Then fix it on the ceiling.

Packing Information:

Model	Quantity/Carton	Packing Size	Net Weight	Gross Weight
AXX-E	1 PC	13.78x21.65x7.09inch/350x550x180mm	9.52 lbs/4.32kg	11.68 lbs/5.30kg